

The ProSUM Project

Producing best available data

Manufacturer's perspective

18 September 2016

Information Network meeting

Dr. Thomas Marinelli

PHILIPS



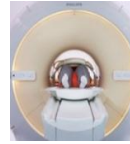
This project has received funding from the European Union's Horizon 2020 research and innovation programme under grant agreement No 641999.

Product portfolio (a flavour)

Royal Philips



Personal Care



Magnetic Resonance, Ultrasound



Sleep & Respiratory Care



Sound and vision



Household products



Mother & Childcare

Philips Lighting



Luminaires



Lamps



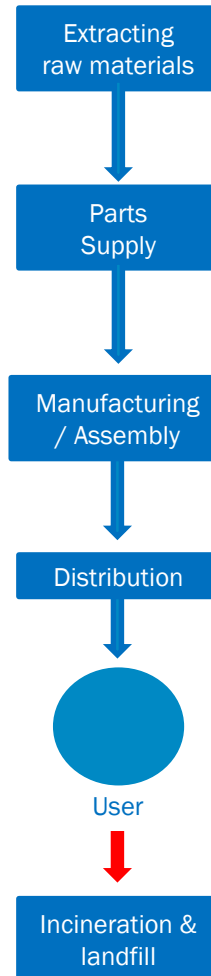
Electronics



Controls

Material Flow in the Value Chain

- Many companies perform final assembly
- The suppliers are *directly* using the materials
- Companies are cooperating (or requesting) suppliers to use either virgin or recycled materials

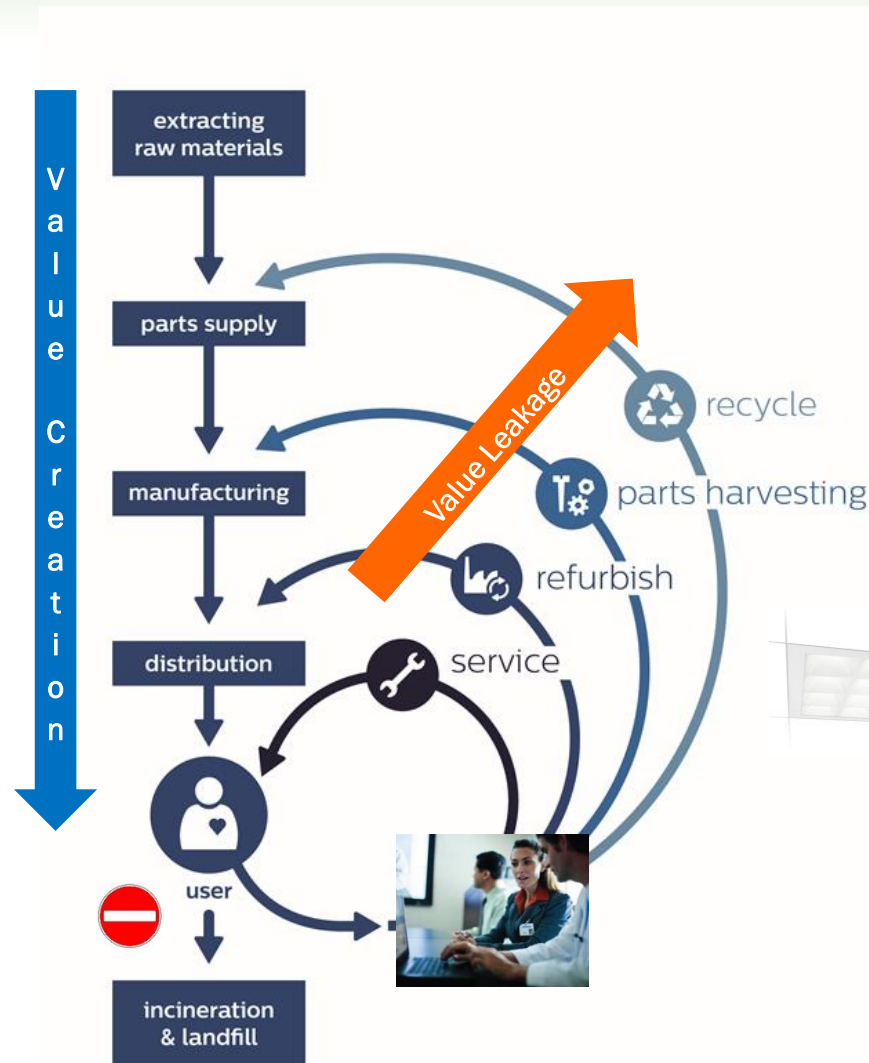


- Linear Use of Materials
- A lot of Intrinsic Value lost



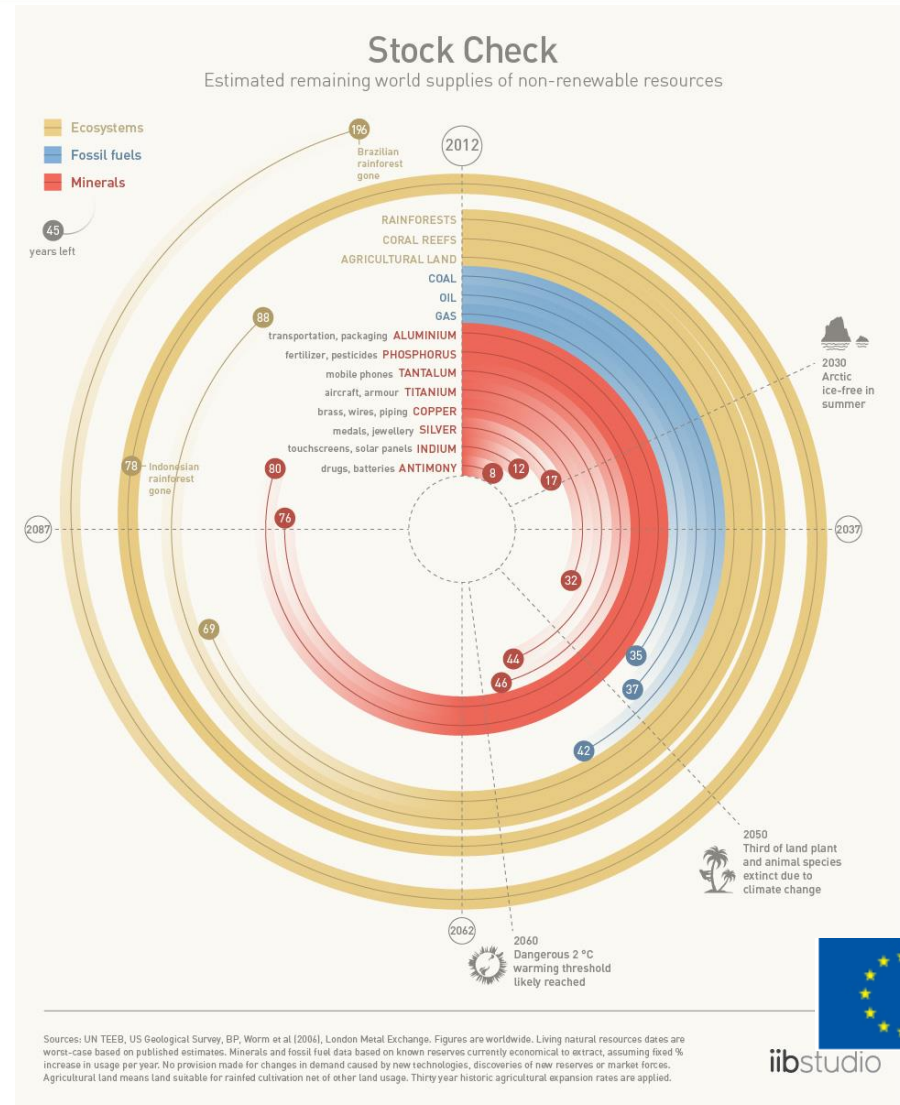
Focus Philips Lighting

- Capture intrinsic value of systems, products and components.
- Circular Economy is beneficial for the planet
- All four loops are creating jobs



Excess & Quality of Materials is Key

- Population growth - increasing to 10 billion in 2050
- Increasing wealth - +3 Billion people middle class
- Additional demand for products, services and solutions
- “Industry’s” need for excess & quality of materials is clear





Dr. Thomas Marinelli
Head of Sustainable Products
Philips Lighting
Thomas.Marinelli@Philips.com

PHILIPS



This project has received funding from the European Union's Horizon 2020 research and innovation programme under grant agreement No 641999.