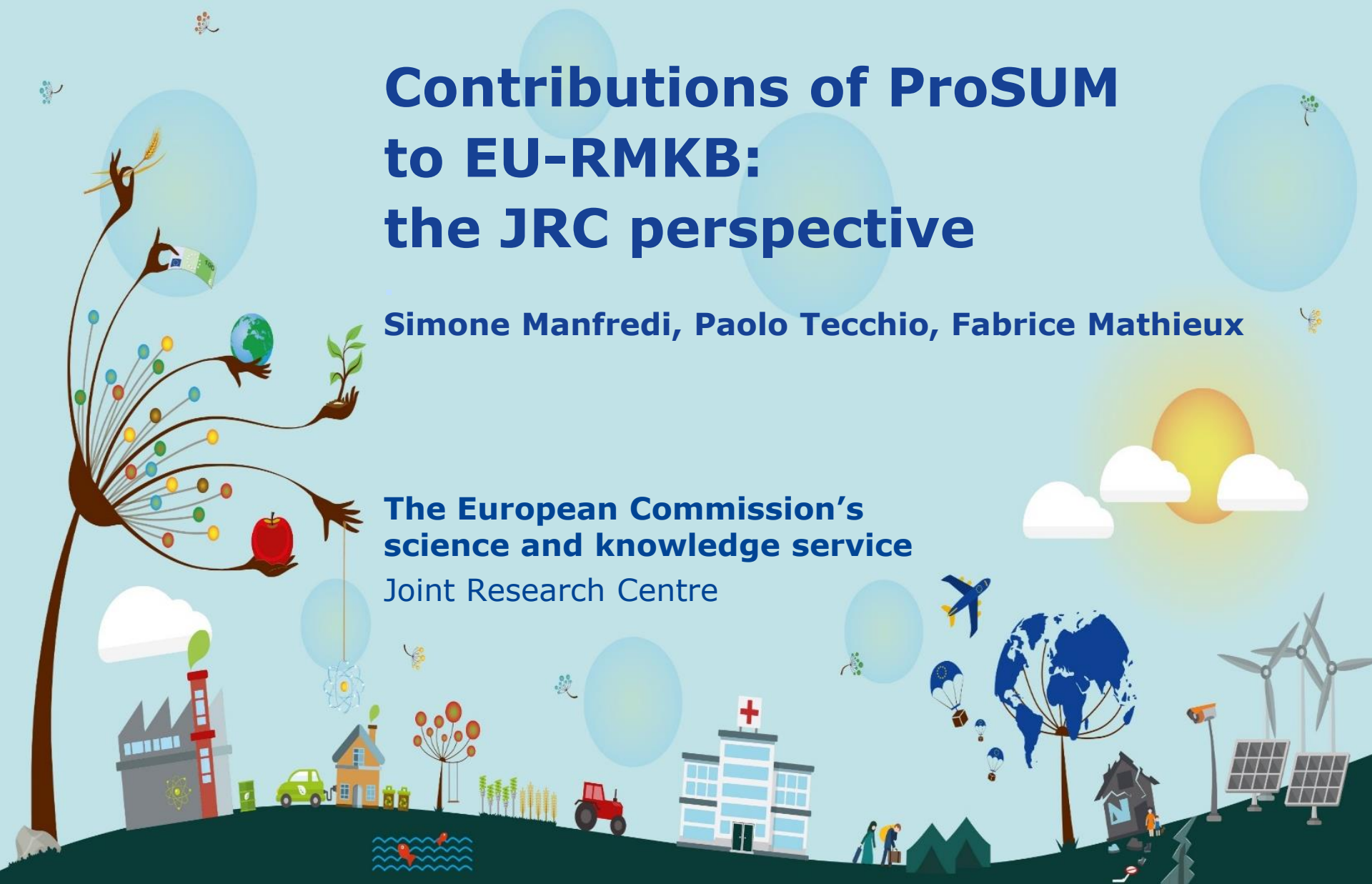


Contributions of ProSUM to EU-RMKB: the JRC perspective

Simone Manfredi, Paolo Tecchio, Fabrice Mathieux

The European Commission's
science and knowledge service
Joint Research Centre

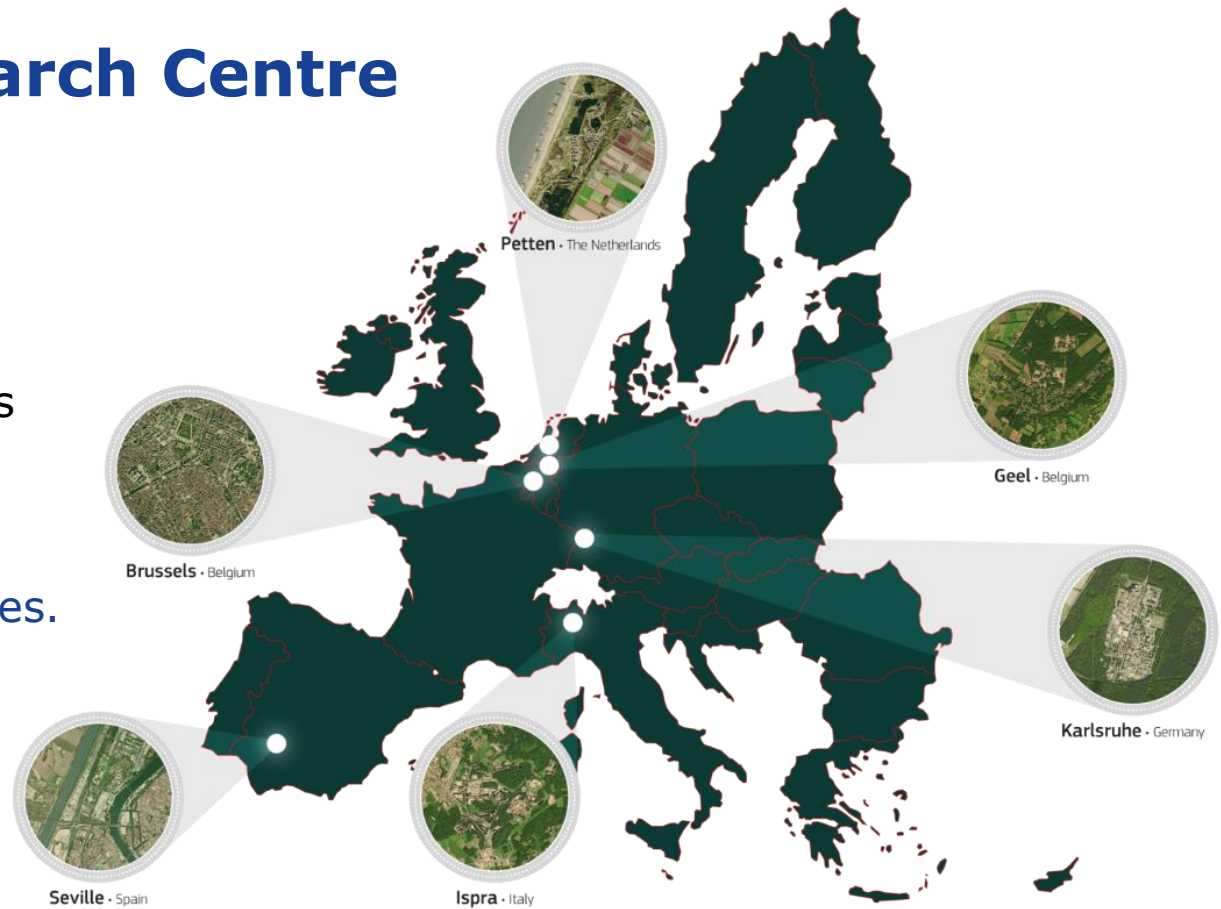


The Joint Research Centre at a glance

3000 staff

Almost 75% are scientists
and researchers.

Headquarters in Brussels
and research facilities
located in 5 Member States.



The Raw Materials Information System



Overarching RMIS goals

- ✓ availability, coherence, and quality of knowledge
- ✓ access to key raw materials information

Sources of data → Eurostat, H2020 projects, etc.

Further data needs

New areas of investigation are still affected by many **data gaps**. As an example → **Secondary Raw Materials (SRMs)**

What is the contribution of H2020 projects?

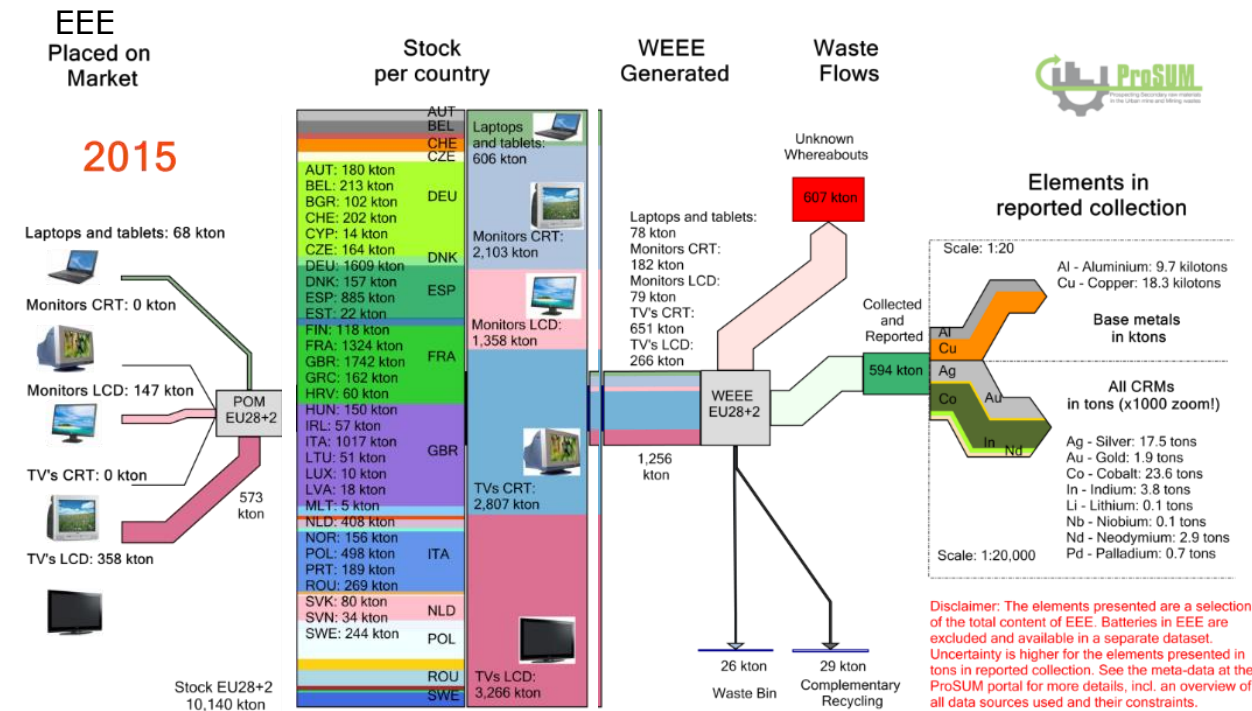


ProSUM: Prospecting Secondary raw materials in the Urban mine and Mining wastes

ProSUM overall goal:

Better data and intelligence can help to improve collection and recycling volumes

- ✓ Sectors /Applications
- ✓ EU & Country level detail
- ✓ Stocks and lifetime considered
- ✓ Waste flows

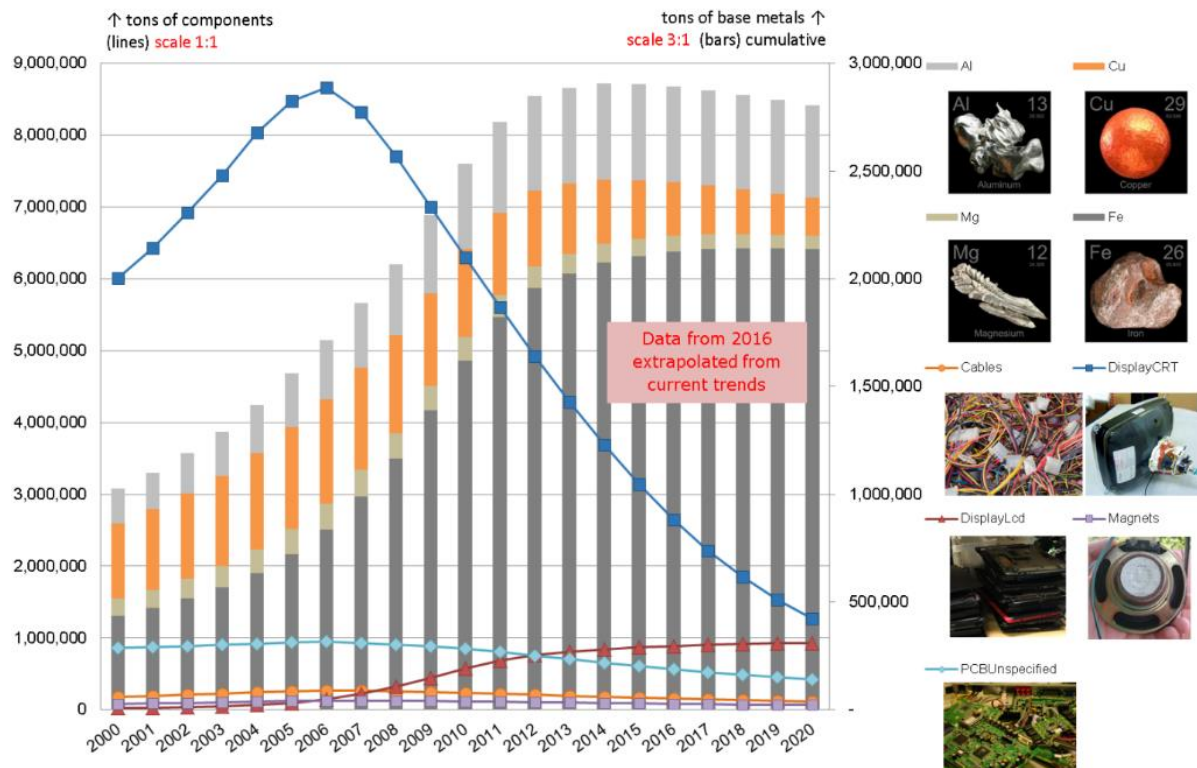


The case of screens (also visible in RMIS)

ProSUM

Selected components (left axis, lines) and **base metals** (right axis, bars) in **stock 2000** – 2020, in tons

ProSUM results can be **tailored** for a number of needs (including *policy needs*)



The case of screens (also visible in RMIS)

How the RMIS links to ProSUM?



EU Urban Mine Knowledge Data Platform (**EU-UMKDP**)

- ✓ Batteries
- ✓ End of Life Vehicles
- ✓ WEEE
- ✓ Mining Waste



The screenshot shows the RMIS website interface. At the top, it says "EU SCIENCE HUB" and "Raw Materials Information System (RMIS)". Below this is a grid of nine navigation tiles. The tiles are: "OVERVIEW", "POLICY & LEGISLATION", "TERMINOLOGY & LIBRARY", "CRITICAL RAW MATERIALS", "RM SCOREBOARD & OTHER MONITORING SYSTEMS", "SECONDARY RAW MATERIALS & CIRCULAR ECONOMY", "ENVIRONMENTAL & SOCIAL SUSTAINABILITY", "ECONOMICS & TRADE", "INDUSTRY & INNOVATION", "RAW MATERIALS' PROFILES & SUPPLY CHAINS", "COUNTRY PROFILES", and "RAW MATERIALS KNOWLEDGE GATEWAY (RMKG)". The tiles for "SECONDARY RAW MATERIALS & CIRCULAR ECONOMY" and "RAW MATERIALS KNOWLEDGE GATEWAY (RMKG)" are highlighted with a red border.

Stay in touch



EU Science Hub: ec.europa.eu/jrc



Twitter: [@EU_ScienceHub](https://twitter.com/EU_ScienceHub)



Facebook: [EU Science Hub - Joint Research Centre](https://www.facebook.com/EU_Science_Hub_-_Joint_Research_Centre)



LinkedIn: [Joint Research Centre](https://www.linkedin.com/company/joint-research-centre)



YouTube: [EU Science Hub](https://www.youtube.com/EU_Science_Hub)